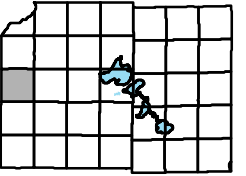
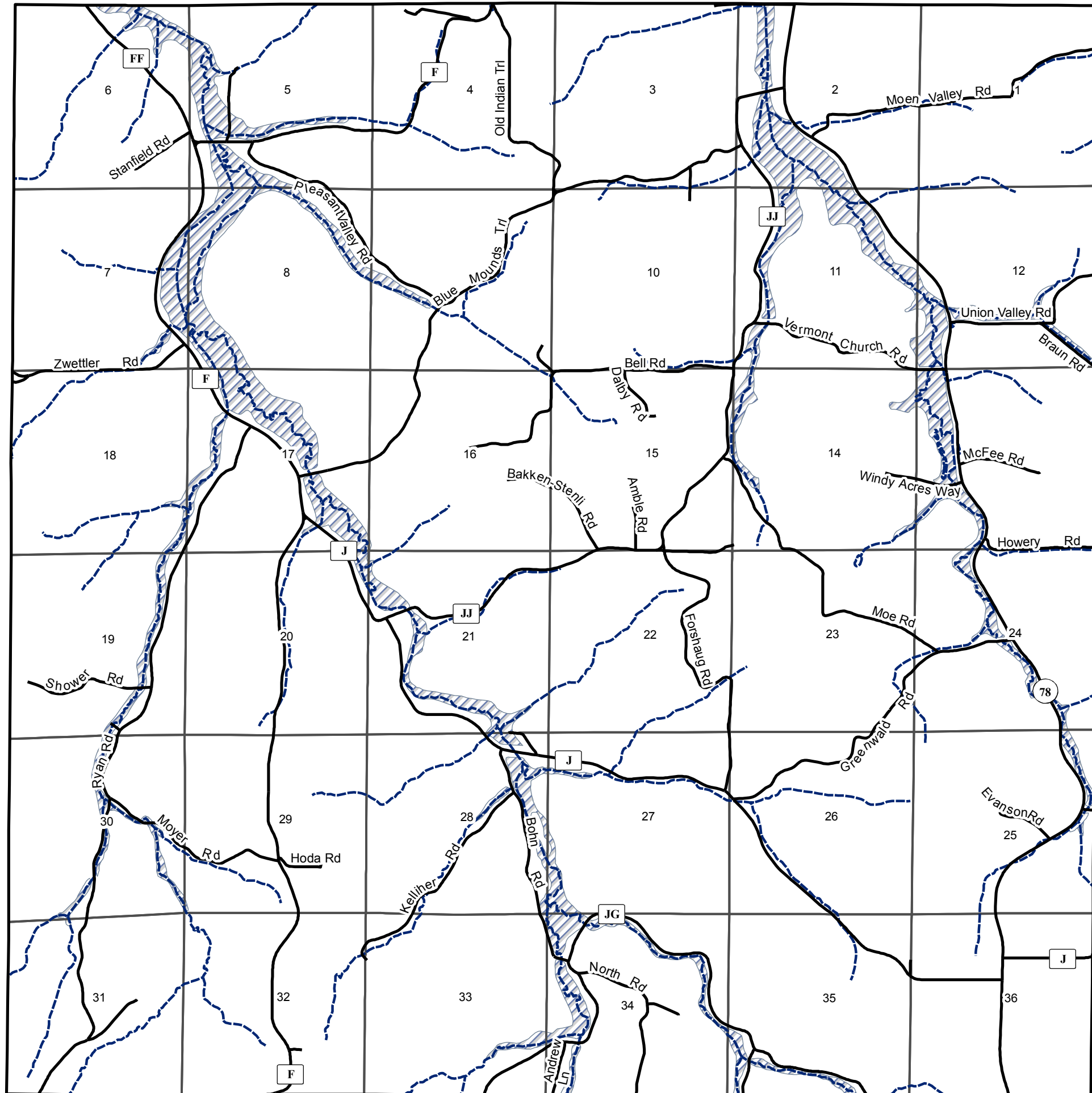




# Town of Vermont



## Floodplains



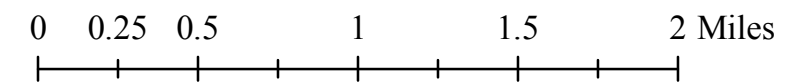
-  Drainage Waterways
-  100 Year Floodplain (FEMA)

*The National Flood Insurance Program maps are maintained and updated by The Federal Insurance and Mitigation Administration's Hazard Mapping Division.*

*Floodplains do not represent only those areas that will flood, rather they are meant to locate potential areas that are susceptible to flooding. For a detailed analysis of floodplains contact the FEMA Hazard Mapping Division at 1-877-FEMA-MAP*

*For interpretation or regulation of floodplains contact the Dane County Zoning Administrators office at 266-9083*

Oct., 2008



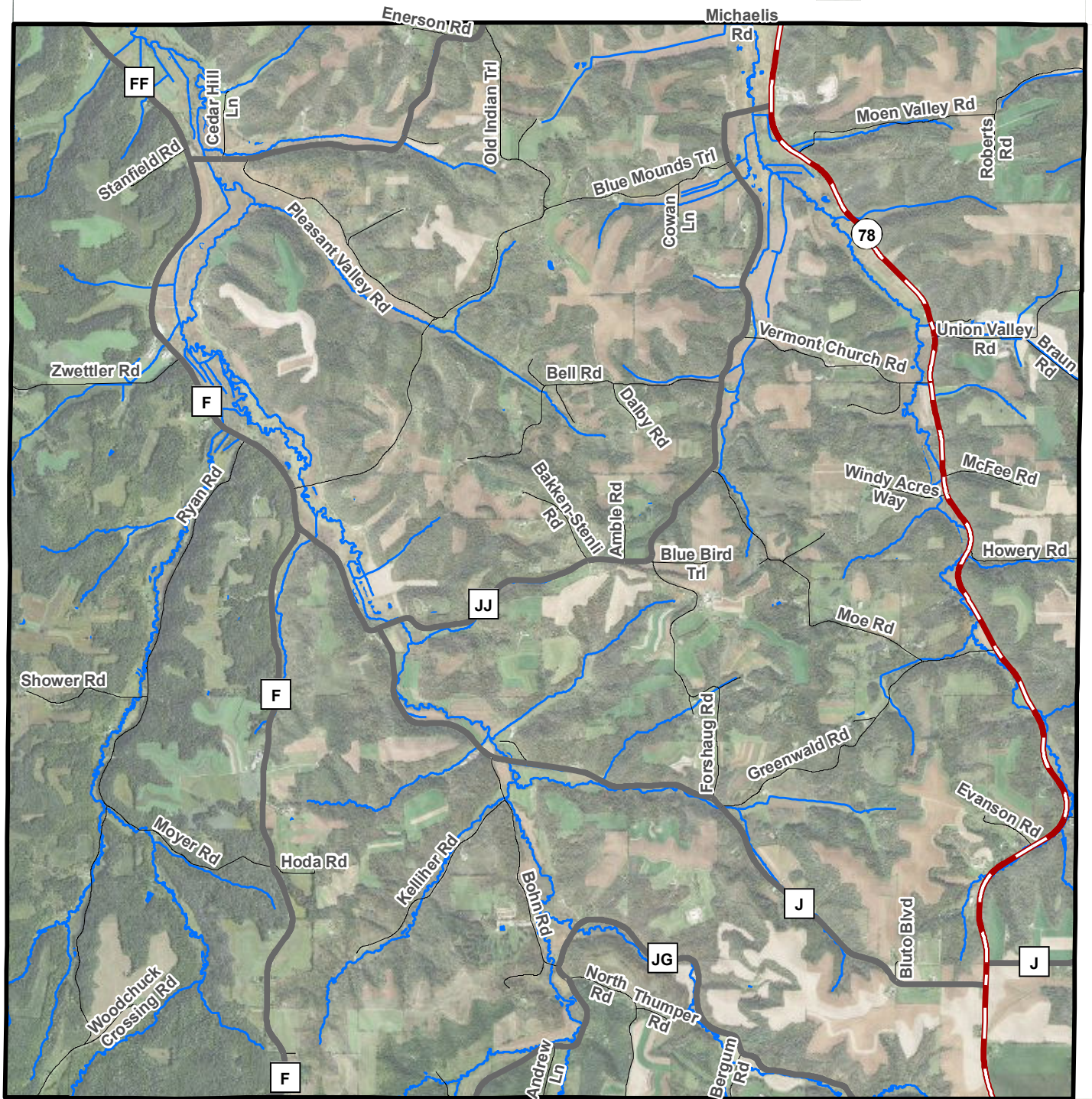
Source Info:  
100 YR Floodplain (FEMA): 2003, (FEMA).  
Road Network: 2008, (DCLIO).



This map was prepared through the Dane County Department of Planning and Development in conjunction with the Dane County Land & Water Resources Department, Dane County Land Information Office and the Dane County Community Analysis & Planning Division.



# TOWN OF VERMONT Aerial 2015

Dane County, Wisconsin



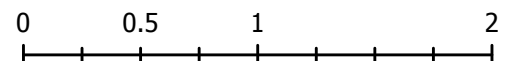
-  Municipal Boundary
-  Open Water

DANE COUNTY  
**PLANNING & DEVELOPMENT**



Date: 06/15/2017

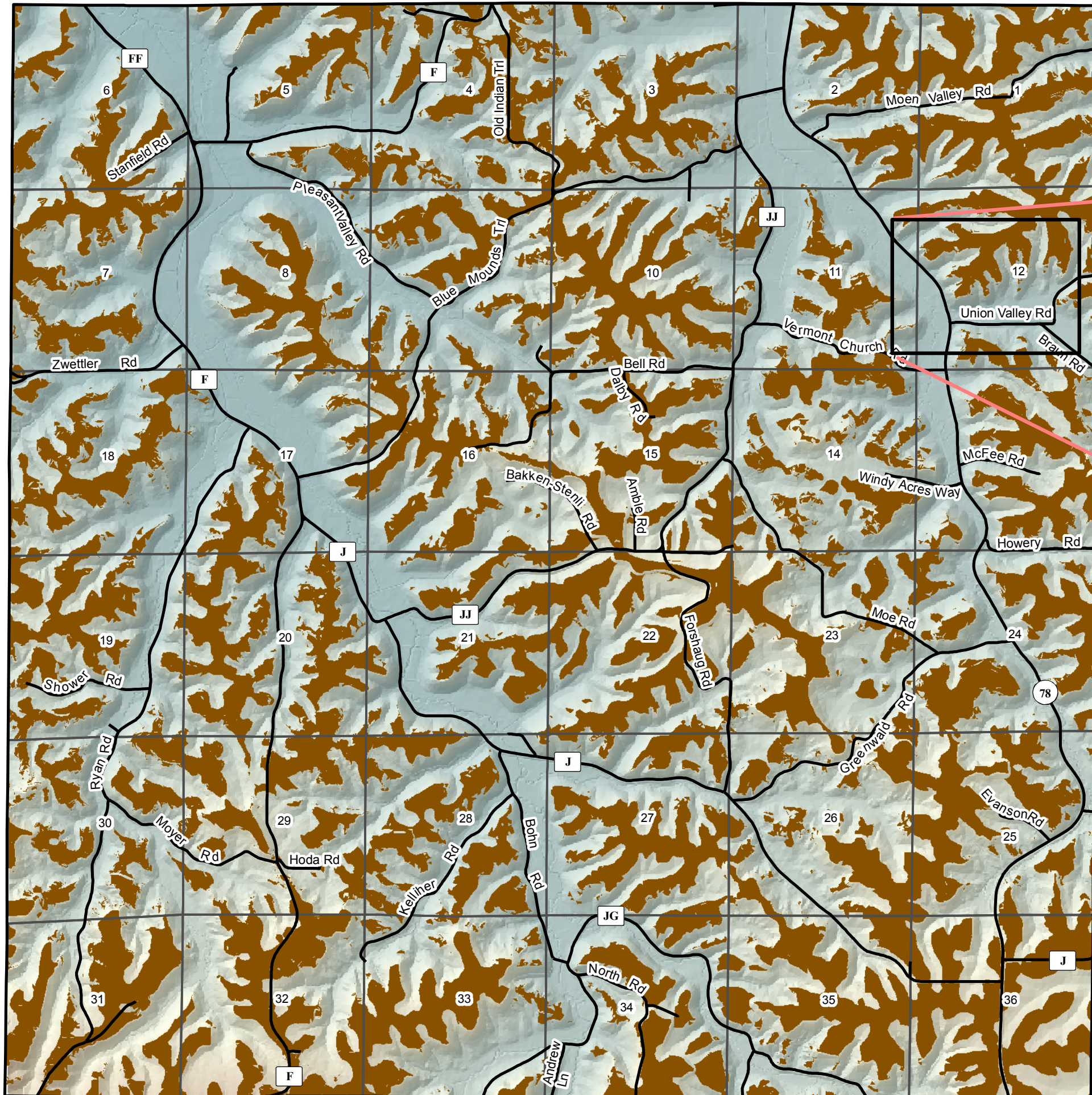
Miles





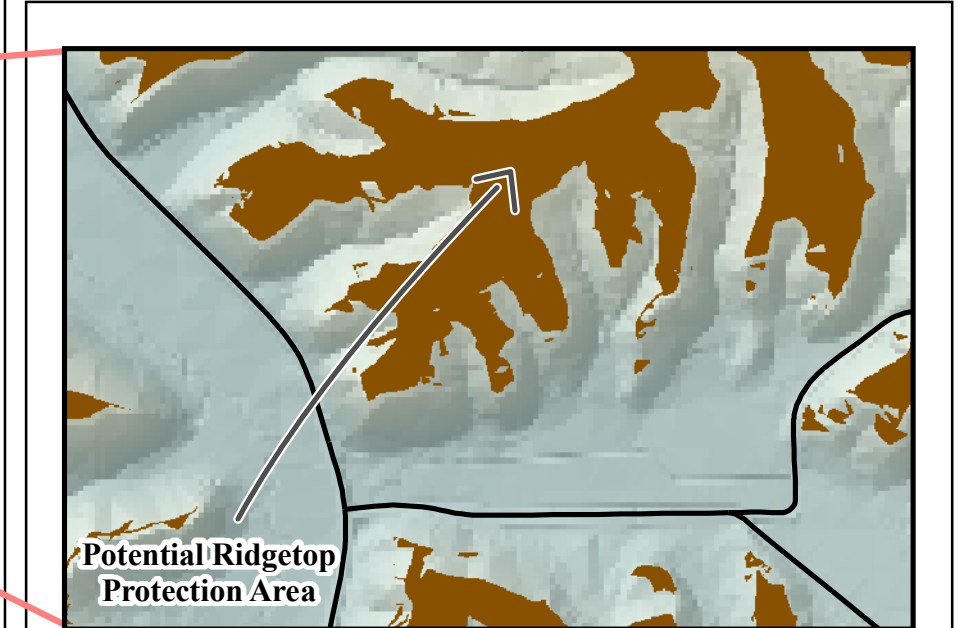
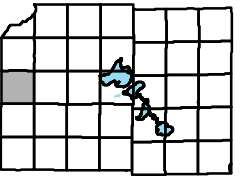






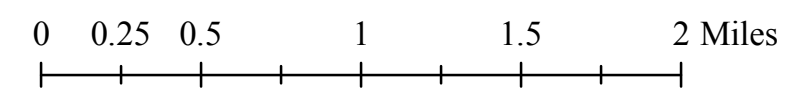
# Town of Vermont

## Approximate Representation of Ridgetop Protection Area



- Ridgetop Protection Area
- Valleys
- Section Boundary

The Ridgetop Protection Area (RPA) is defined as any location that is located above the shoulder of the ridge. The shoulder is the point at which the local slope changes from greater than 20% to less than 20%. *Oct., 2008*



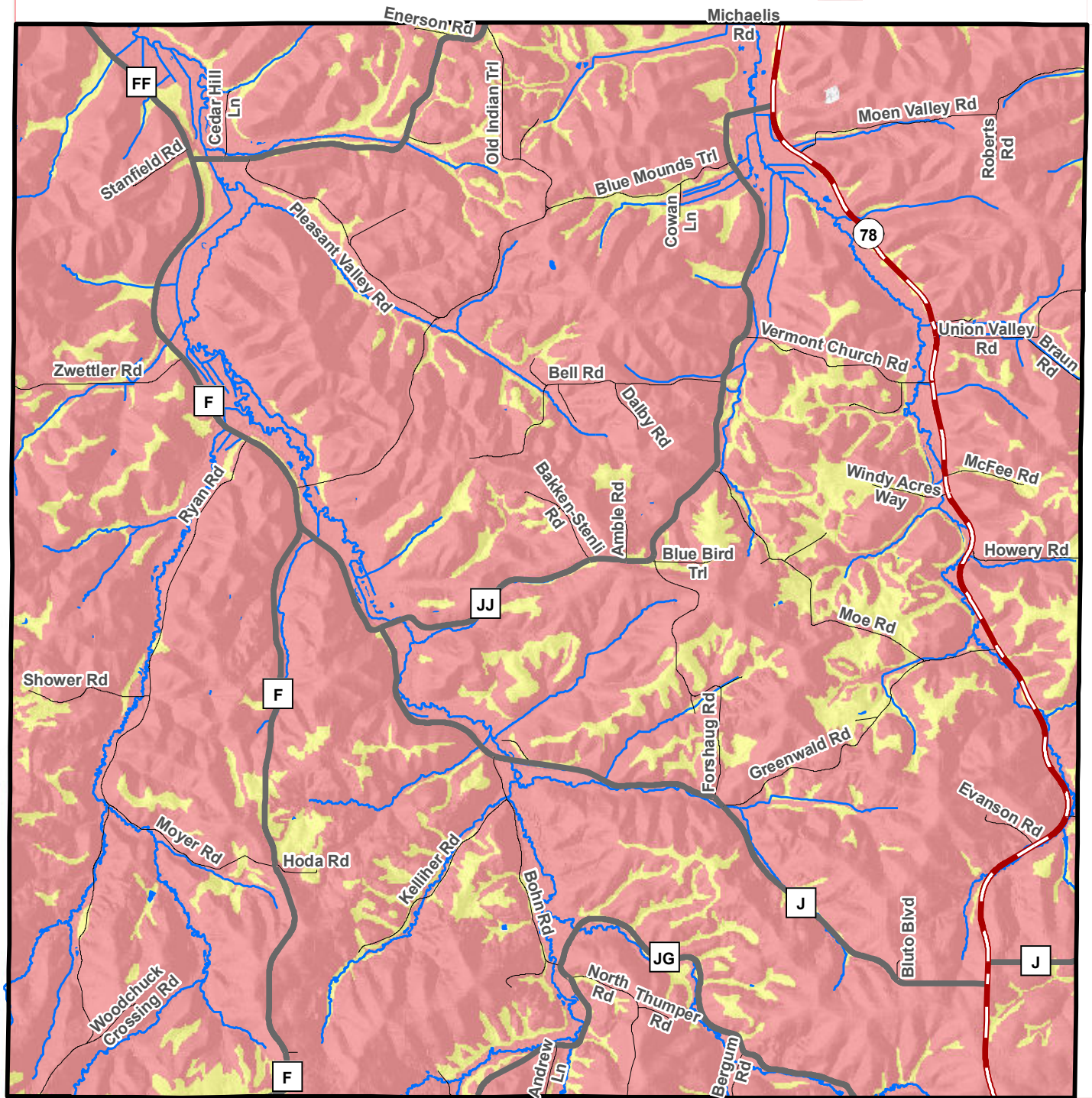
Source Info:  
Slopes 20%: DCPD 2007  
Elevation: 2005 DCLIO

This map was prepared through the Dane County Department of Planning and Development in conjunction with the Dane County Land & Water Resources Department, Dane County Land Information Office and the Dane County Community Analysis & Planning Division.



# TOWN OF VERMONT Building Site Potential

Dane County, Wisconsin



**Building Site Potential from Soils for Dwellings with Basements**

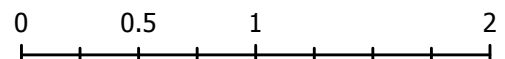
-  Municipal Boundary
-  Open Water
-  Very Limited
-  Somewhat Limited
-  Not Limited

DANE COUNTY  
**PLANNING & DEVELOPMENT**



Date: 06/15/2017

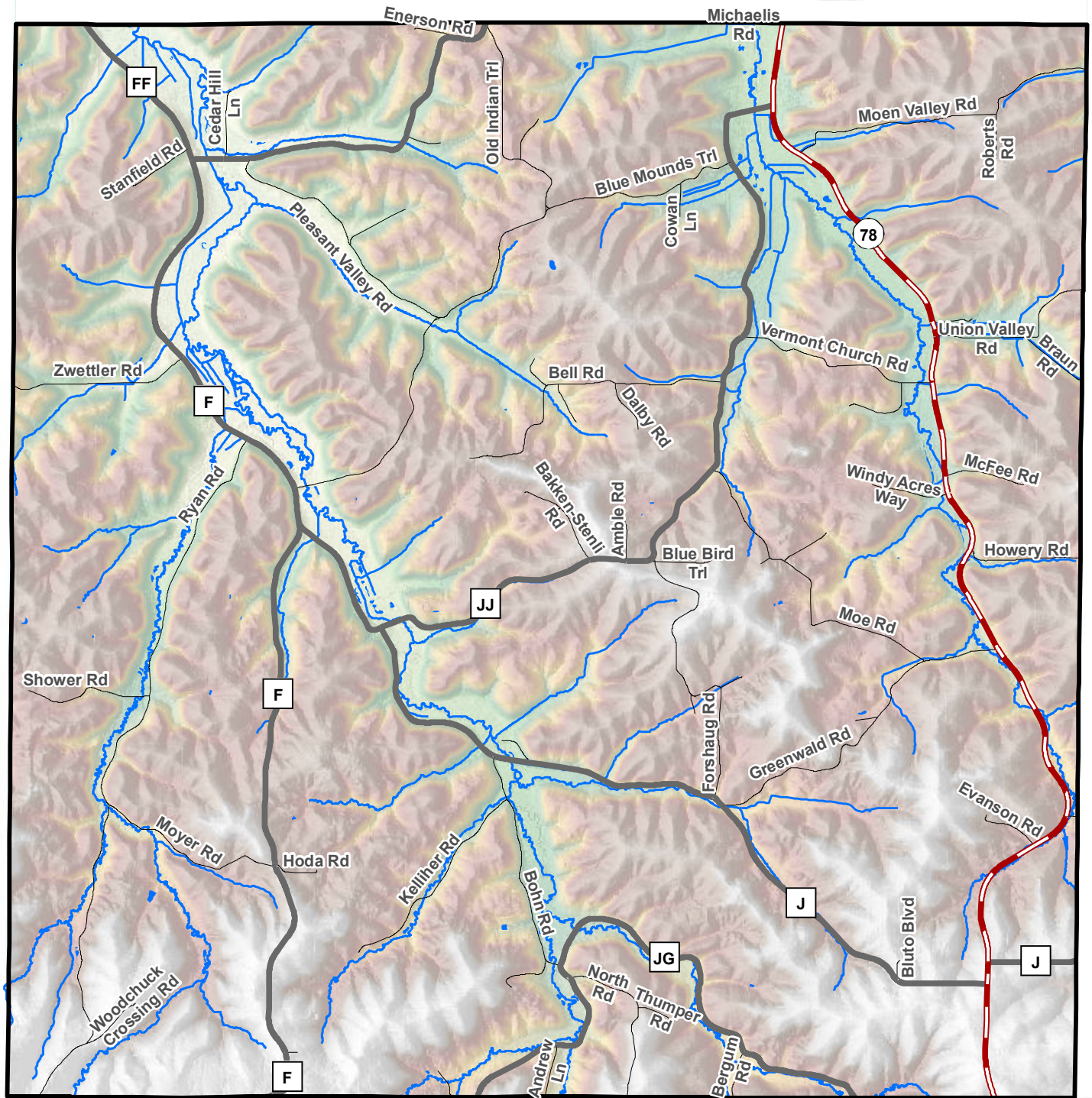
Miles







# TOWN OF VERMONT Elevation

Dane County, Wisconsin



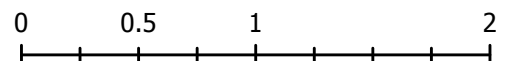
-  Municipal Boundary
-  Open Water

DANE COUNTY  
**PLANNING & DEVELOPMENT**

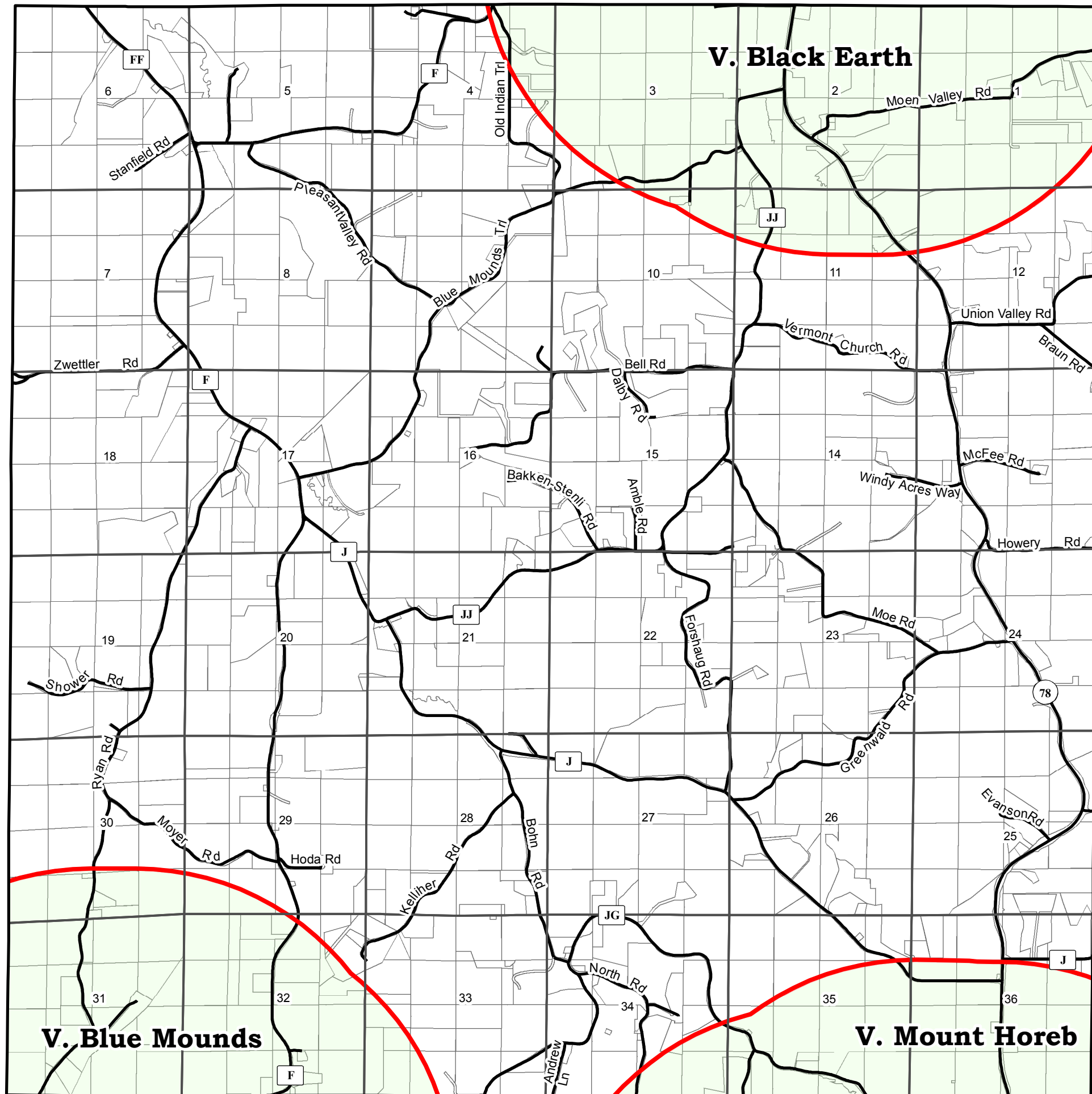


Date: 06/15/2017

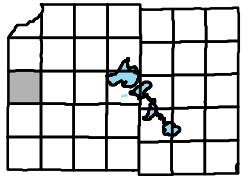
Miles







# Town of Vermont



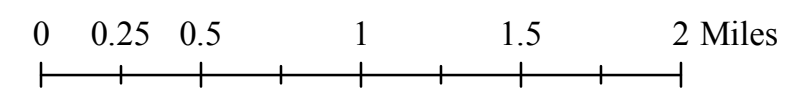
## Extra Territorial Jurisdiction

- Extra Territorial Jurisdiction
- Section Boundary
- Parcels

The ETJ boundary will move as Cities and Villages change their limits (through addition or removal) this map is only current as of the date list below.

See Wisconsin State Statutes 62.23(7a)(a) (This area) means the unincorporated area within 3 miles of the corporate limits of a first, second or third class city, or 1 1/2 miles of a fourth class city or a village.

Oct., 2008

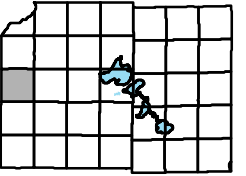


Source Info:  
 ETJ: DCPD 2008  
 Aerial Photograph: DCLIO 2005

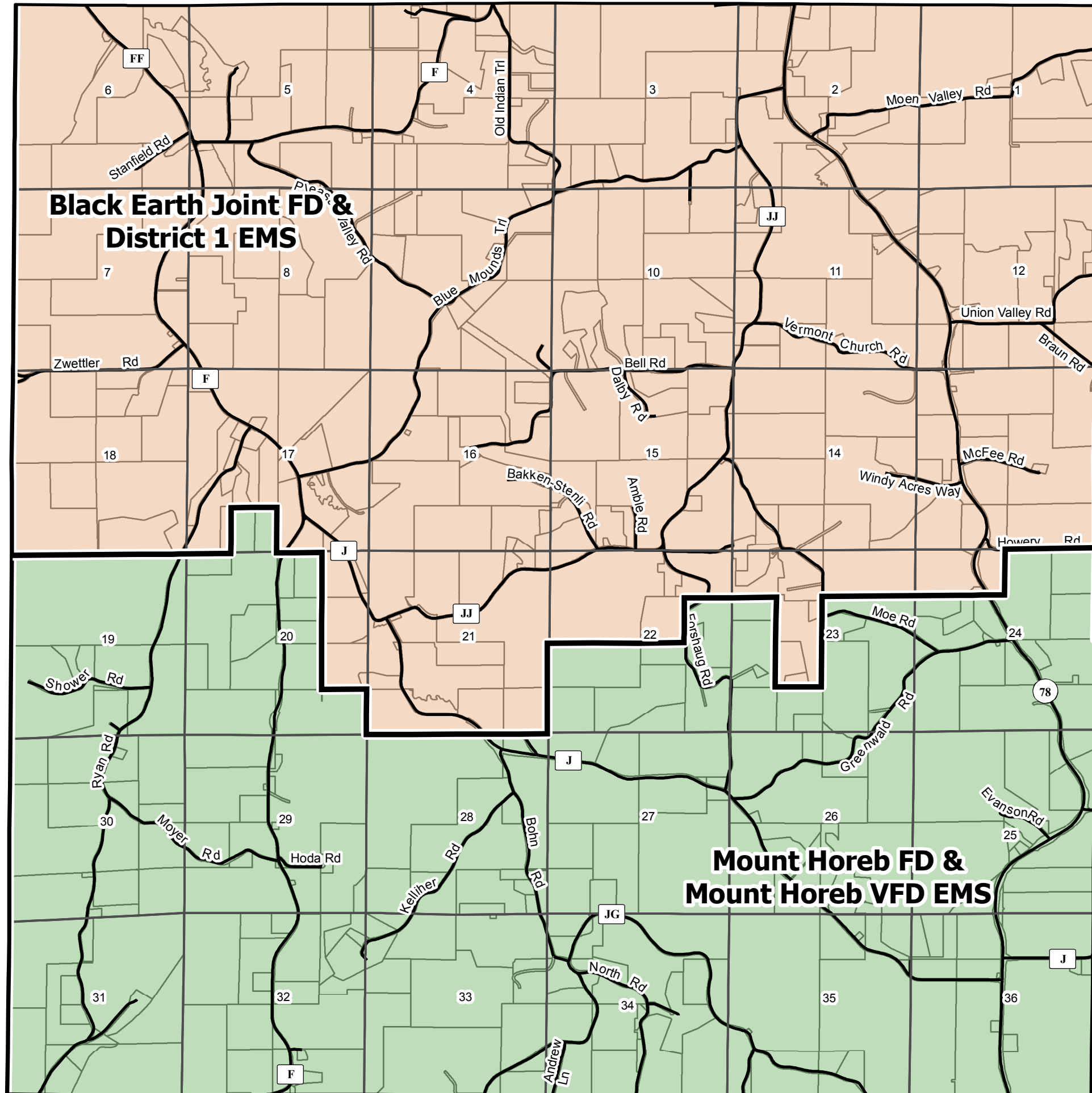
This map was prepared through the Dane County Department of Planning and Development in conjunction with the Dane County Land & Water Resources Department, Dane County Land Information Office and the Dane County Community Analysis & Planning Division.



# Town of Vermont



## EMS, Fire District and Sheriff Precinct



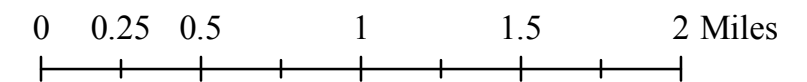
The entire Town of Vermont is within the W2 (Whiskey 2) Sheriff Precinct.

The Black Earth Joint Fire Department is located at  
711 Blue Mounds ST  
Black Earth, WI 53515

The Mount Horeb Fire Department is located at  
120 S First ST  
Mount Horeb, WI 53572

District One EMS Station is located at  
316 W. Commercial St  
Mazomanie, WI 53560

Oct., 2008



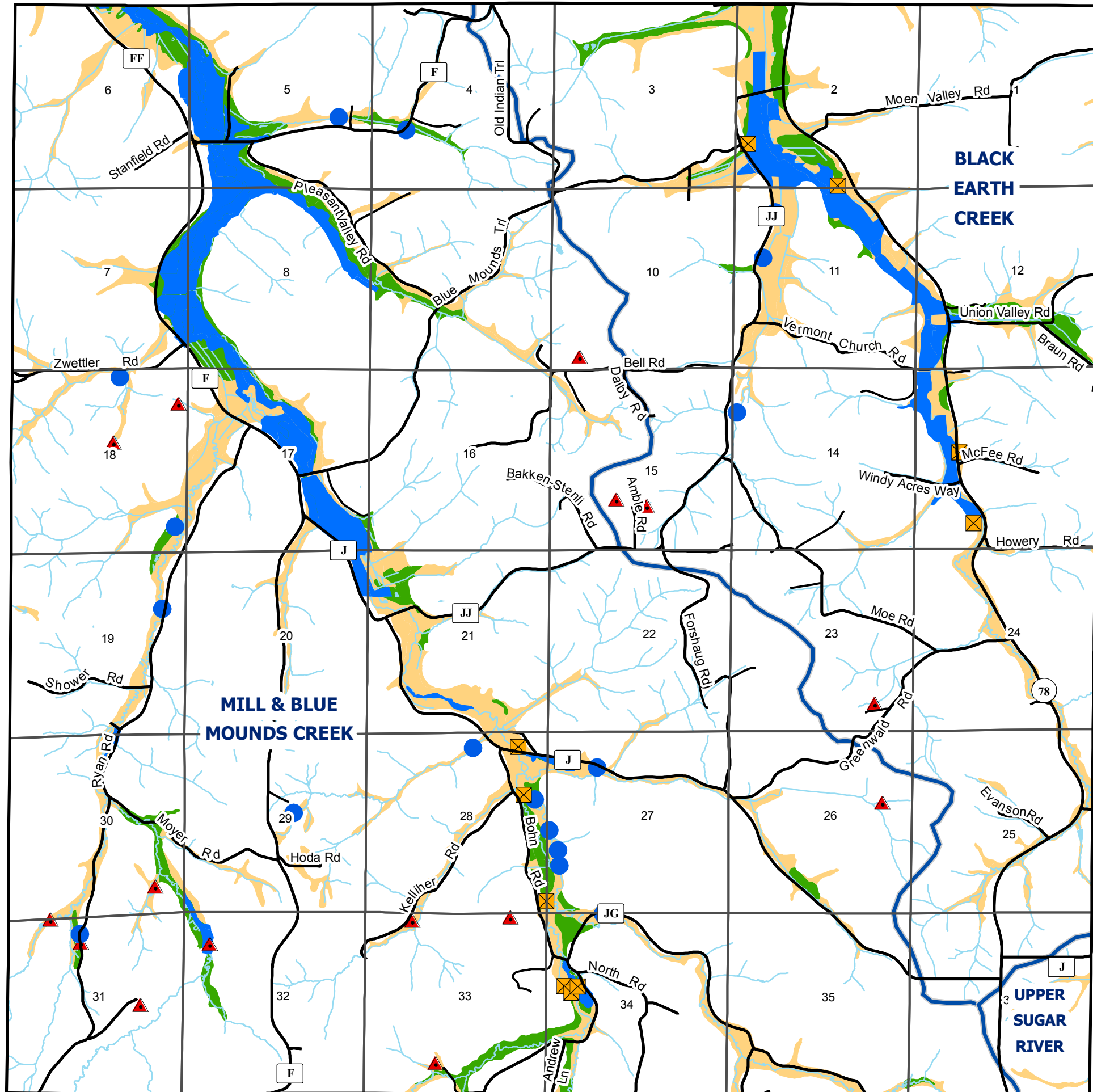
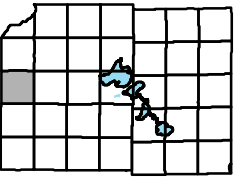
Source Info:  
EMS Districts: 2007, (DCLIO)  
Fire Districts: 2007, (DCLIO)  
Sheriff Districts: 2007, (DCLIO)








This map was prepared through the Dane County Department of Planning and Development in conjunction with the Dane County Land & Water Resources Department, Dane County Land Information Office and the Dane County Community Analysis & Planning Division.



# Town of Vermont

## Hydric Soils & Wetlands



-  Watershed Boundary
-  Wetlands < 2 acres
-  Dammed Pond
-  Excavated Pond
-  Wetlands > 2 acres
-  Hydric Inclusions
-  All Hydric

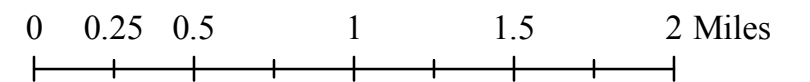
Hydric soils are those soils that are sufficiently wet in the upper part to develop anaerobic conditions during the growing season

The 100 year floodplain is based on a digitization of the National Flood Insurance Program maps. These maps are maintained and updated by The Federal Insurance and Mitigation Administration's Hazard Mapping Division.

Floodplains do not represent only those areas that will flood, rather they are meant to locate potential areas that are susceptible to flooding. For a detailed analysis of floodplains contact the FEMA Hazard Mapping Division at 1-877-FEMA-MAP

For interpretation or regulation of floodplains contact the Dane County Zoning Administrators office at 266-9083

Oct., 2008



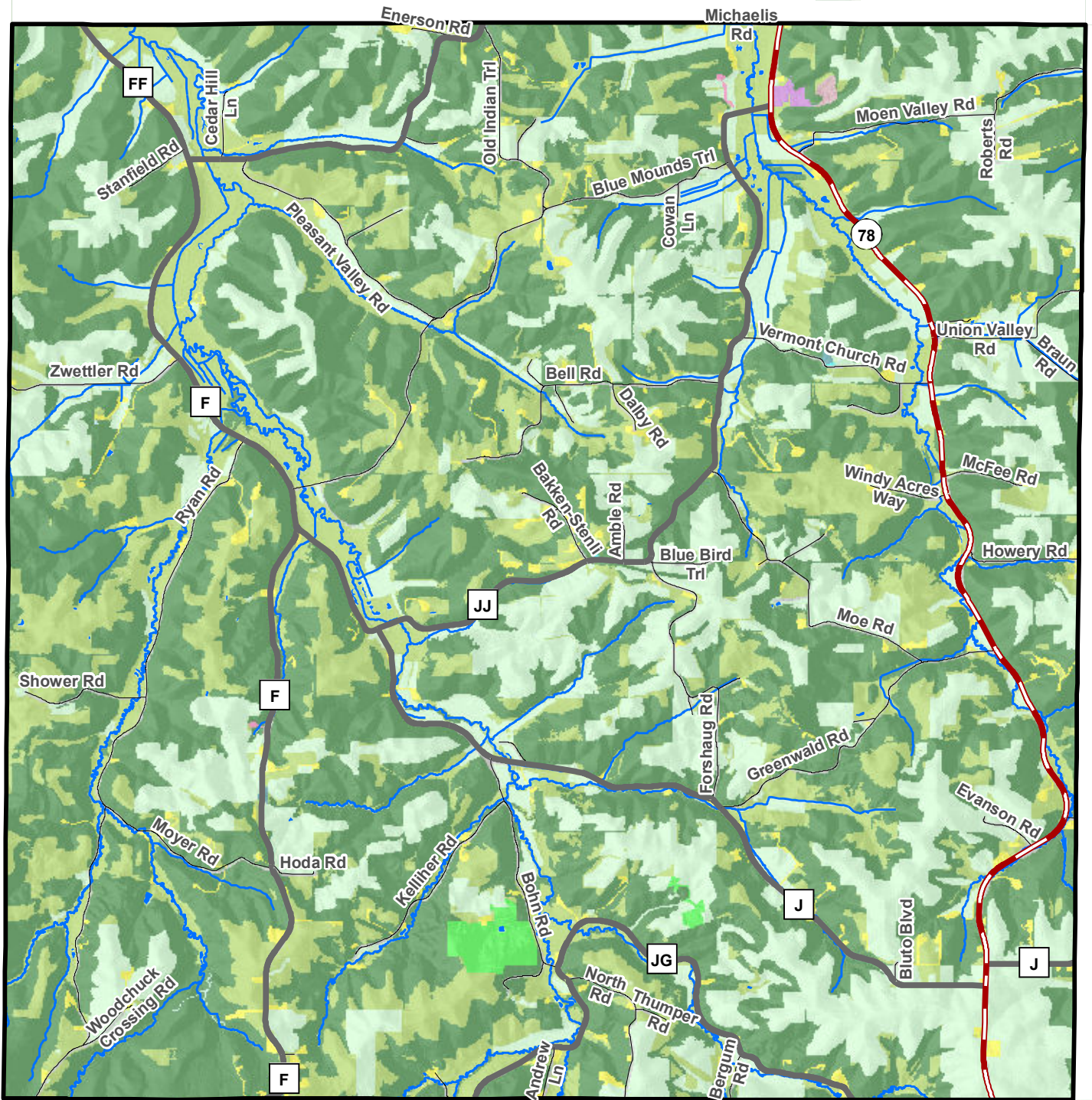
Source Info:  
 Floodplain: 2003, (FEMA)  
 Hydric Soils: Digital Soils (NRCS, LCD, LICGF)  
 Hydrography: 2005, (WIDNR)  
 Watershed Boundaries: 2005, (DCLIO)  
 Wetlands: 2000, (WIDNR)

This map was prepared through the Dane County Department of Planning and Development in conjunction with the Dane County Land & Water Resources Department, Dane County Land Information Office and the Dane County Community Analysis & Planning Division.



# TOWN OF VERMONT Land Use 2015

Dane County, Wisconsin



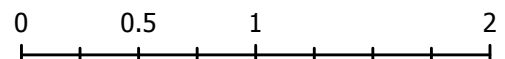
- |                             |                               |                    |
|-----------------------------|-------------------------------|--------------------|
| Municipal Boundary          | Industrial                    | Two Family         |
| Open Water                  | Institutional or Governmental | Under Construction |
| Agriculture                 | Open Land                     | Vacant             |
| Cemetery                    | Outdoor Recreation            | Water              |
| Communications or Utilities | Right of Way                  | Woodland           |
| Extractive                  | Single Family                 |                    |

DANE COUNTY  
**PLANNING & DEVELOPMENT**



Date: 06/15/2017

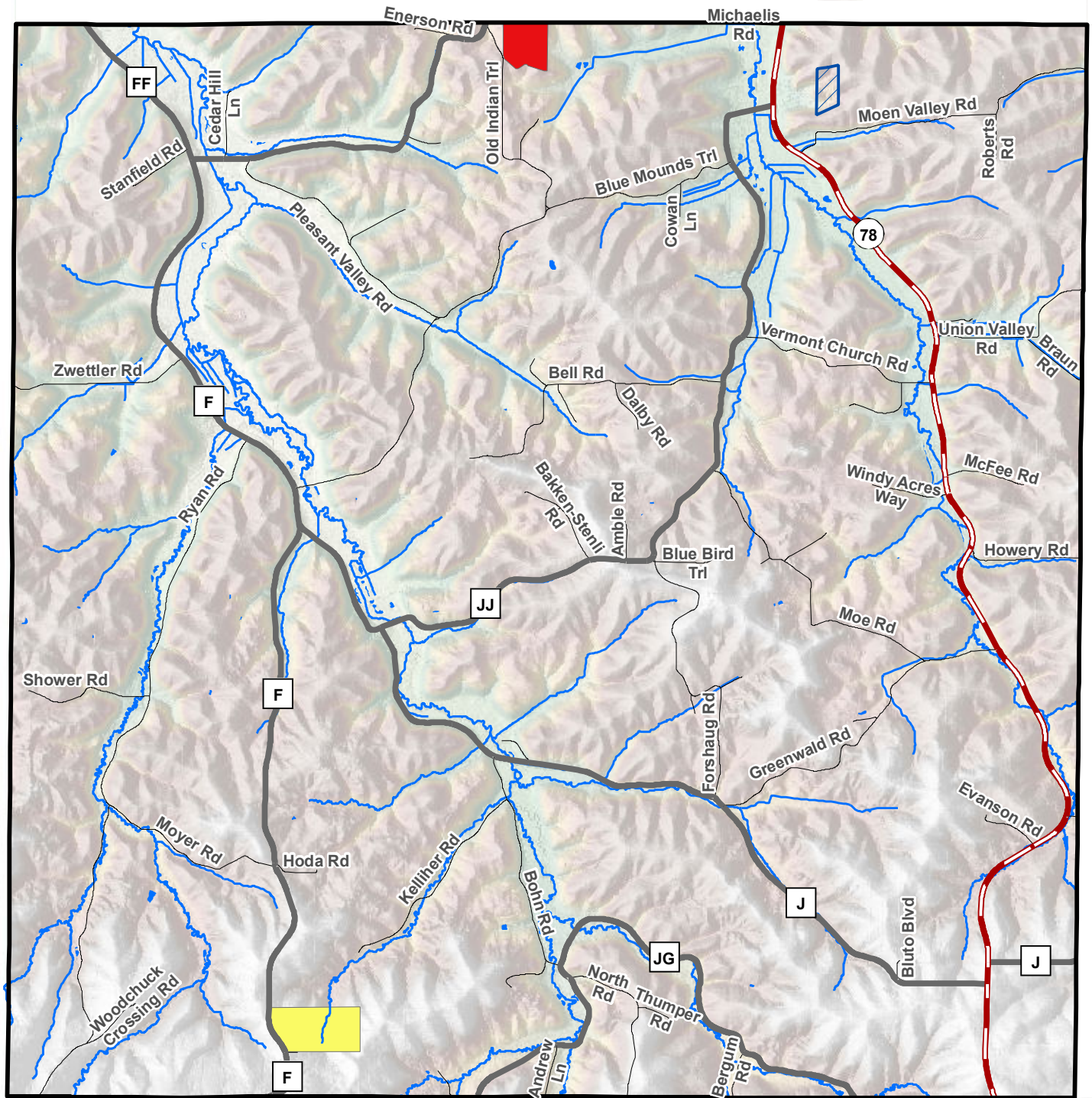
Miles





# TOWN OF VERMONT Mineral Extraction

Dane County, Wisconsin



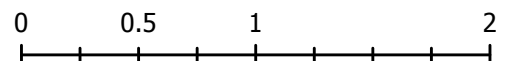
- Municipal Boundary
- Open Water
- Effective Conditional Use Permits (Mineral Extraction)
- Historical Activity, Not Active (Abandoned), No Reclamation Plan
- No Activity, Maybe Reclaimed

DANE COUNTY  
**PLANNING & DEVELOPMENT**



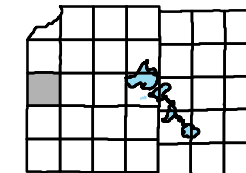
Date: 05/18/2017

Miles

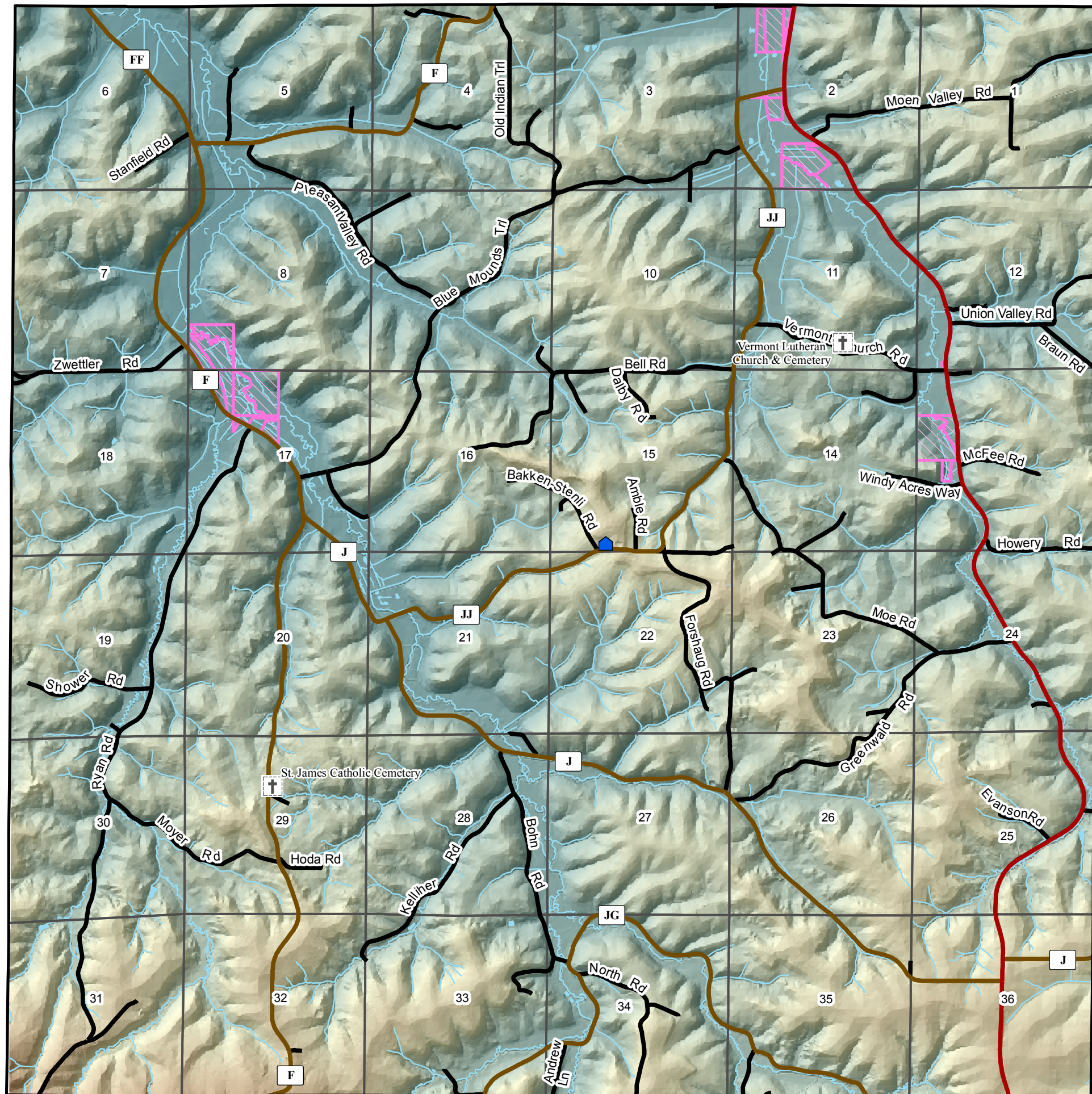










# Town of Vermont

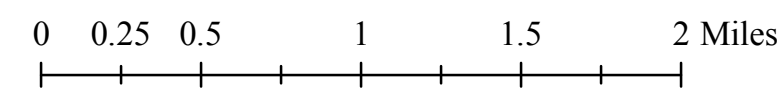


## Utilities & Infrastructure



-  Town Hall
-  Cemetery
-  State or Federal Lands
-  State Highway
-  County Highway
-  Town Road

Dec., 2008

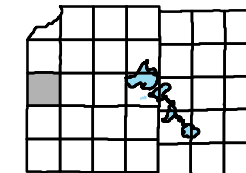


Source Info:  
 Cemetery: 2008, (CARPC)  
 Electrical Substation: 2005, (DCPD)  
 State or Federal Lands: 2007, (CARPC)  
 Towers: 2006, (DCPD)  
 Town Hall: 2008, (DCPD)

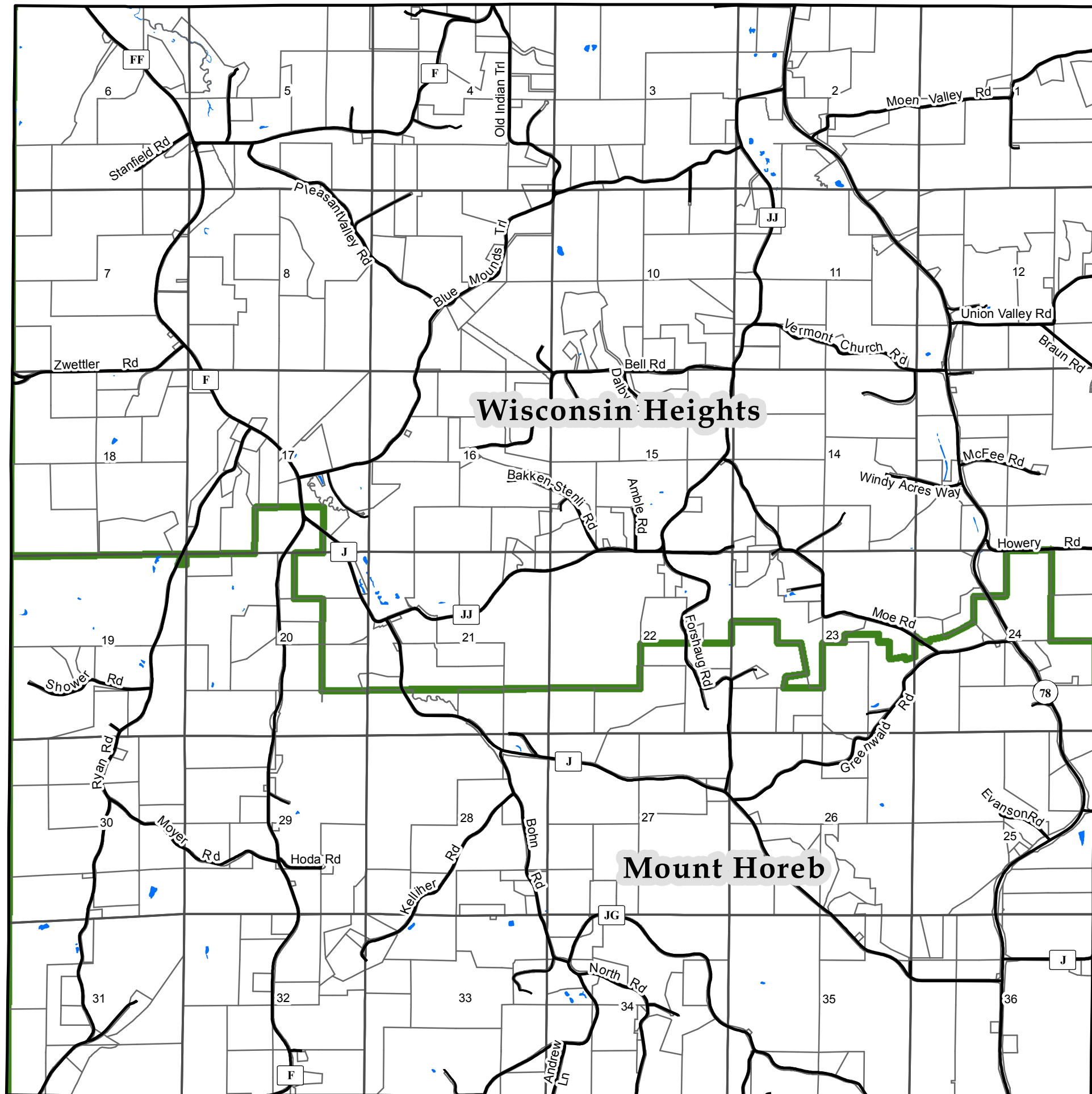
This map was prepared through the Dane County Department of Planning and Development in conjunction with the Dane County Land & Water Resources Department, Dane County Land Information Office and the Dane County Community Analysis & Planning Division.



# Town of Vermont



## School Districts

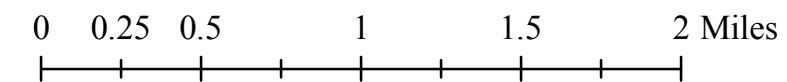


 School Districts (2007)

In 2006 the Mount Horeb School District had 2174 enrollees.  
 Their office is located at 1304 E. Lincoln St  
 Mount Horeb, WI 53572  
 or at [www.mhasd.k12.wi.us](http://www.mhasd.k12.wi.us)

In 2006 the Wisconsin Heights School District had 963 enrollees.  
 Their office is located at 10173 US Highway 14  
 Mazomanie, WI 53560  
 or at [www.wisheights/k12.wi.us/](http://www.wisheights/k12.wi.us/)

Oct, 2008



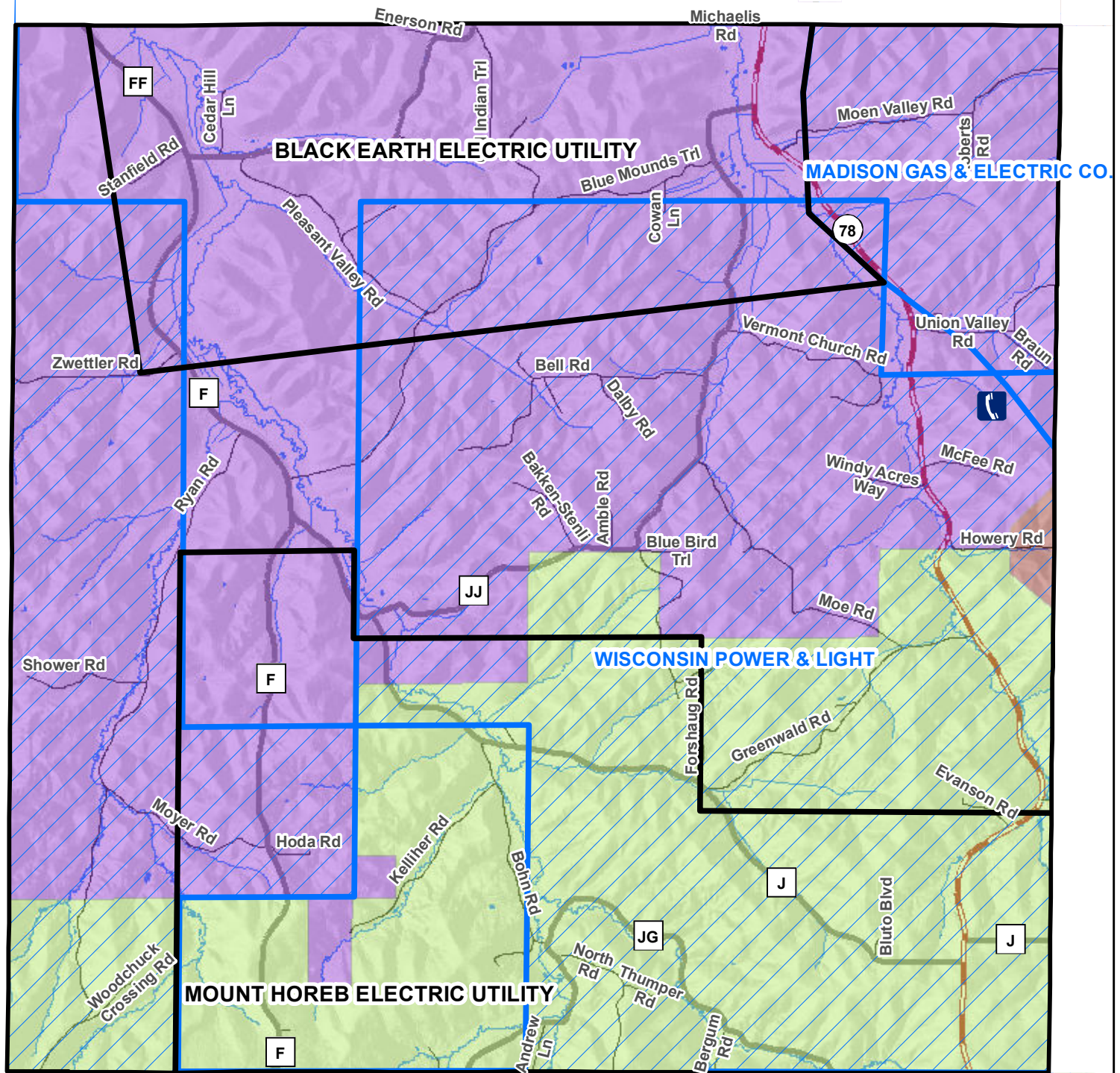
Source Info:  
 School Districts: 2007, Tax Parcels (CARPC)

This map was prepared through the Dane County Department of Planning and Development in conjunction with the Dane County Land & Water Resources Department, Dane County Land Information Office and the Dane County Community Analysis & Planning Division.



# TOWN OF VERMONT Utilities

Dane County, Wisconsin

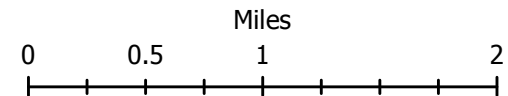


-  Wisconsin electric service territories for municipal utilities.
-  Wisconsin electric service territories for investor-owned utilities.
-  Black Earth
-  Cross Plains
-  Mount Horeb
-  Municipal Boundary
-  Cell Towers

Telephone Exchange Boundary (PSC 2013)



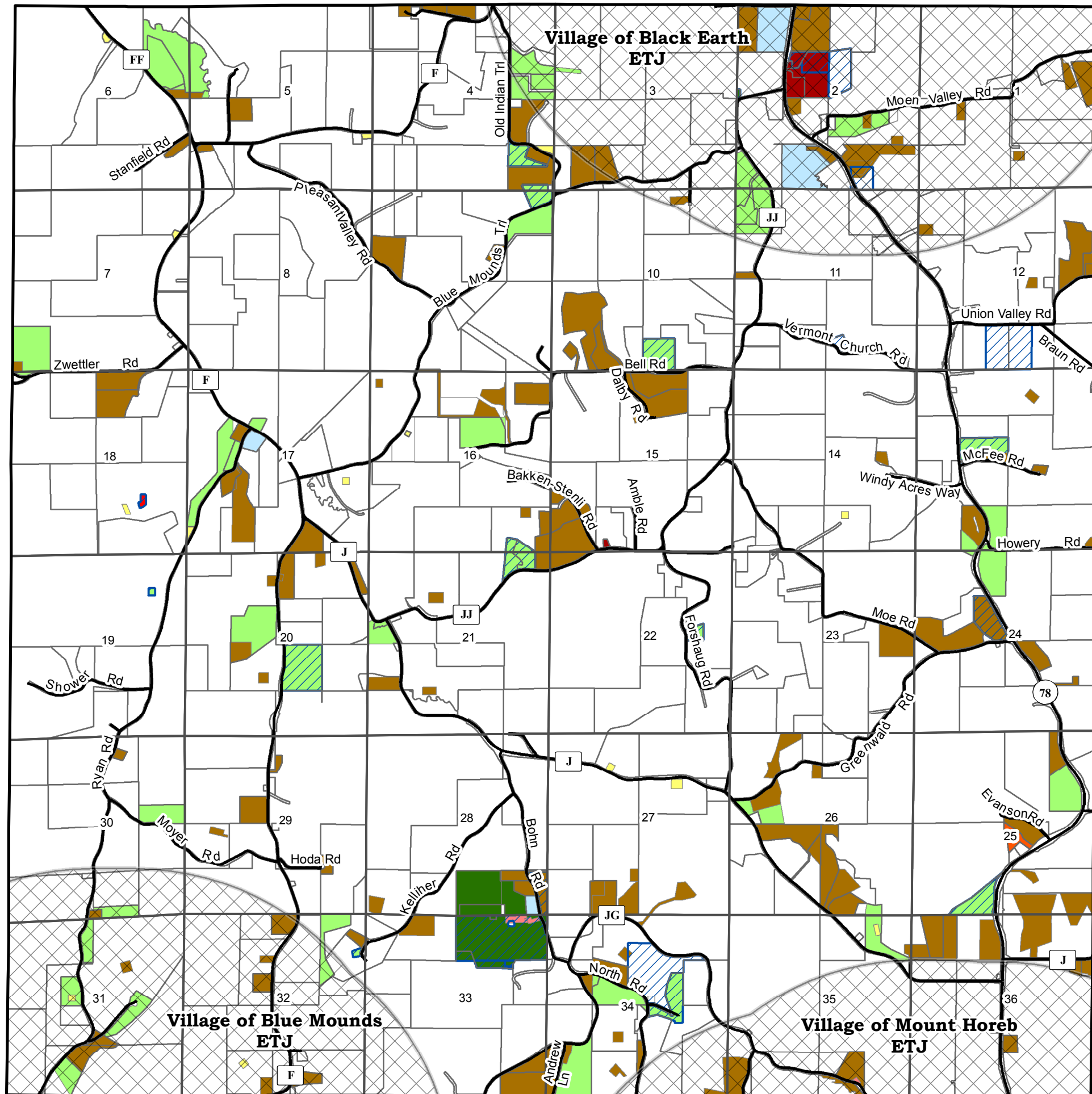
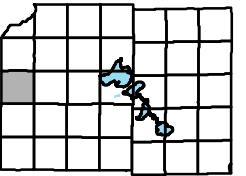
Date: 06/28/2017

















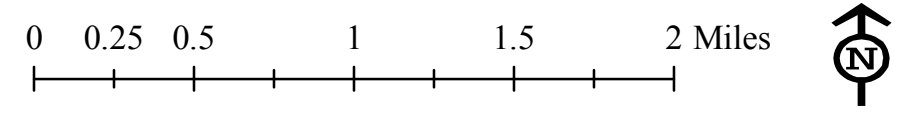
# Town of Vermont

## Zoning



-  ExtraTerritorial Plat Review Jurisdiction
- Zoning District**
-  A-1 or A-1EX Agricultural
-  A-2, A-2(1), A-2(2), A-2(4), A-2(8), A-3 Agricultural
-  B-1 Local Business
-  C-1 Light Commercial
-  C-2 Heavy Commercial
-  CO-1 Conservancy
-  LC-1 Limited Commercial
-  R-1, R-1A, R-2
-  RE-1 Recreational
-  RH-1, RH-2, RH-3, RH-4
-  Effective Conditional Use Permits

Oct., 2008



Source Info:  
Zoning: 08/2008 (DCPD)

This map was prepared through the Dane County Department of Planning and Development in conjunction with the Dane County Land & Water Resources Department, Dane County Land Information Office and the Dane County Community Analysis & Planning Division.