

NOTES:

- CAREFULLY REMOVE AND SALVAGE GUARDRAIL AND STACK IN ROW, CONTACT THE TOWN ROAD PATROLMAN FOR REMOVAL, SEE SPECIAL PROVISIONS.
- CONTACT THE TOWN ROAD PATROLMAN FOR REMOVAL OF OBJECT MARKER AND LOAD POSTING SIGNS PRIOR TO STARTING WORK, SEE SPECIAL PROVISIONS.
- REMOVE EXISTING 15.1'L X 29'W STEEL GIRDER W/ CONC. DECK BRIDGE. REMOVE THE NORTH CONC. ABUTMENT TO 2' MIN. BELOW FINISHED ROAD GRADE; REMOVE SOUTH ABUTMENT TO 1' MIN. BELOW CHANNEL.
- INSTALL DELINEATOR POSTS STEEL WITH SIGNS TYPE II REFLECTIVE F AT THE END OF EACH WINGWALL.

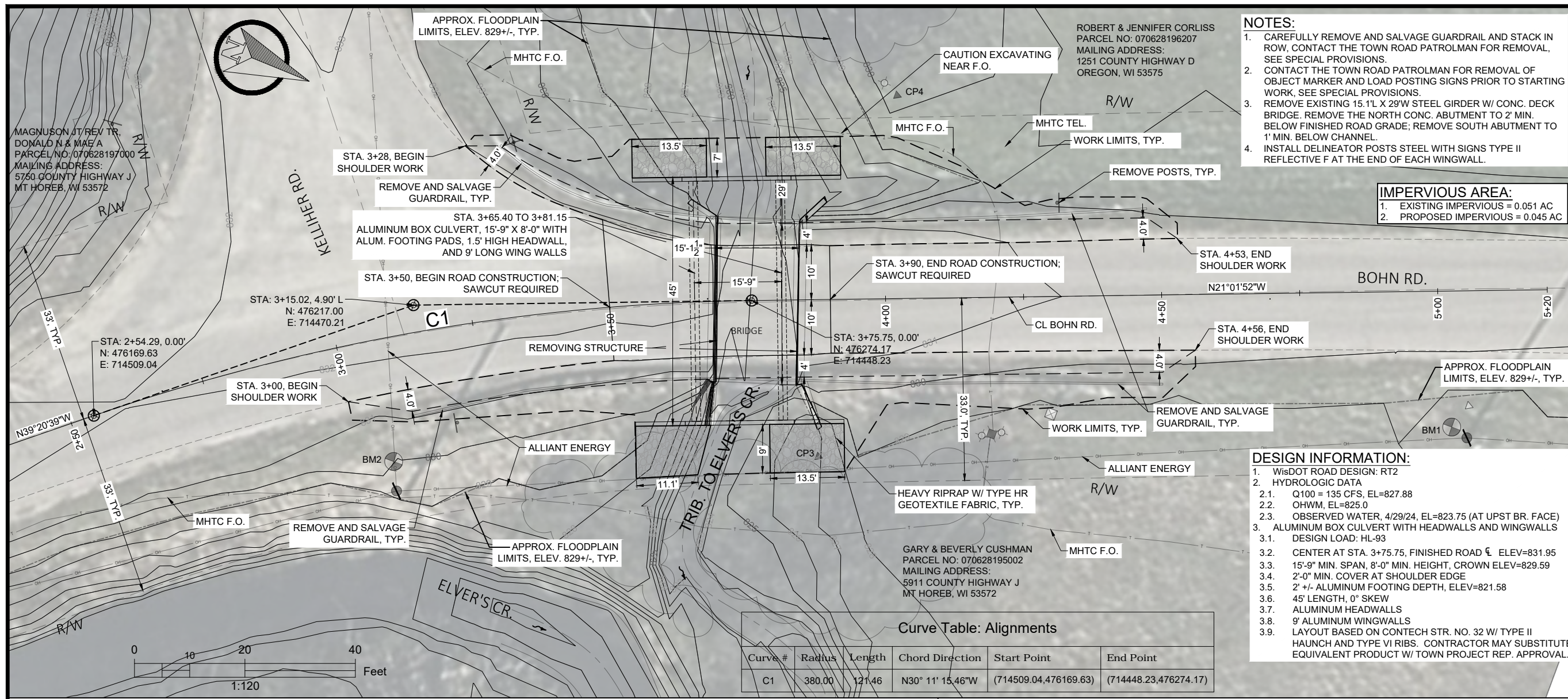
IMPERVIOUS AREA:
 1. EXISTING IMPERVIOUS = 0.051 AC
 2. PROPOSED IMPERVIOUS = 0.045 AC

DESIGN INFORMATION:

- WisDOT ROAD DESIGN: RT2
- HYDROLOGIC DATA
 - Q100 = 135 CFS, EL=827.88
 - OHWM, EL=825.0
 - OBSERVED WATER, 4/29/24, EL=823.75 (AT UPST BR. FACE)
- ALUMINUM BOX CULVERT WITH HEADWALLS AND WINGWALLS
 - DESIGN LOAD: HL-93
 - CENTER AT STA. 3+75.75, FINISHED ROAD CL ELEV=831.95
 - 15'-9" MIN. SPAN, 8'-0" MIN. HEIGHT, CROWN ELEV=829.59
 - 2'-0" MIN. COVER AT SHOULDER EDGE
 - 2' +/- ALUMINUM FOOTING DEPTH, ELEV=821.58
 - 45' LENGTH, 0° SKEW
 - ALUMINUM HEADWALLS
 - 9' ALUMINUM WINGWALLS
 - LAYOUT BASED ON CONTECH STR. NO. 32 W/ TYPE II HAUNCH AND TYPE VI RIBS. CONTRACTOR MAY SUBSTITUTE EQUIVALENT PRODUCT W/ TOWN PROJECT REP. APPROVAL.

Curve Table: Alignments

Curve #	Radius	Length	Chord Direction	Start Point	End Point
C1	380.00	121.46	N30° 11' 15.46"W	(714509.04,476169.63)	(714448.23,476274.17)



STAMPS, LOGOS, AND SEALS

NO.	REVISION / ISSUE	DATE

PROJECT NAME
BOHN RD. OVER TRIBUTARY TO ELVER'S CREEK

STRUCTURE REPLACEMENT

TOWN OF VERMONT

DRAWING TITLE
TYPICAL SECTION, PLAN AND PROFILE

DATE 2/26/2025	ARCHIVE NO.
DESIGNER R. POLKINGHORN	DRAWING SHEET NO. C-04
DRAWN R. POLKINGHORN	CHECKED
PROJECT NO.	SHEET 5 OF 12

